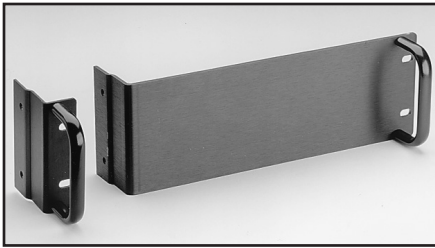


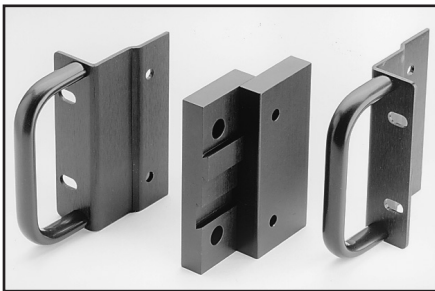
Racks and Rack Mount Kits



Model 248-RMK-1 Fixed Rack Mount Kit:
Enables rack mounting of one Model 248.

For use with: 248

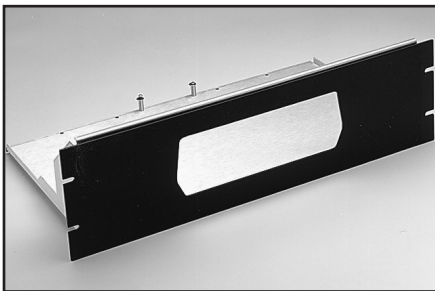
HEIGHT: 89mm (3½ in).



Model 248-RMK-2 Fixed Rack Mount Kit:
Enables rack mounting of two Model 248s side by side.

For use with: 248

HEIGHT: 89mm (3½ in).



Model 1010: A shelf-type kit for mounting a single unit.

For use with: 197A, 580

DIMENSIONS: 132mm high × 483mm wide × 254mm deep (5¼ in × 19 in × 10 in).

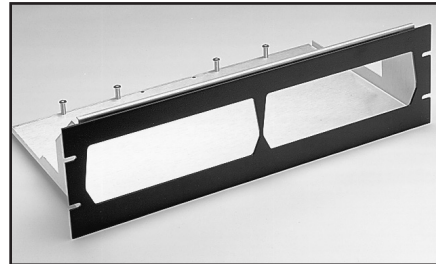
	Single Fixed	Single Slide ¹	Dual Fixed	Type of Mount
197A 485 580	1010		1017	Shelf
428 486 487 2000 Series 2182			4288-2 ²	Side
2300 Series 2400 Series 2500	4288-1		4288-4 ³	Shelf
Series 2700 2701 6430 6485			4288-5 ⁴	Shelf
6487 6514 6517A 7001				
2750 2800	4288-7			Rear bracket
230 230-1 263 595	1019A-1		1019A-2	Bracket w/handles
			4288-4 ³	Shelf
236 237 238	1938	1939		Bracket w/handles
590	2288-1G			
595 230-1			1019A-2G	Bracket w/handles
248	248-RMK-1		248-RMK-2	Side
707A	Included	7079		Side
708A	Included			Side
776	7768		4288-5 ⁴	Side
7002	7002-RMK-1	7002-RMK-2		Bracket w/handles
3300 Series	3900-1		3900-2	Side

¹ Slide rack mount kits are not compatible with equipment cabinet Models 8000-10, 8000-14 and 8000-17.

² Model 4288-2 mounts any two of the listed models, except 776.

³ Model 4288-4 mounts: ANY ONE plus ANY ONE
230, 230-1, 263, 595 428, 486, 487, 2000 Series, 2182, 2300 Series, 2400 Series, 2500 Series, 2700, 2701, 6430, 6485, 6487, 6514, 6517A, 7001

⁴ Model 4288-5 mounts any one or two of the listed models on a shelf-type mount.



Model 1017: Similar to Model 1010 but mounts any two Models 197A and 580.

For use with: 197A, 580

DIMENSIONS: 132mm high × 483mm wide × 254mm deep (5¼ in × 19 in × 10 in).

Models 1019A-*: Fixed rack mounting kits for half-rack, 127mm (5 in) high instruments (see Selector Guide).

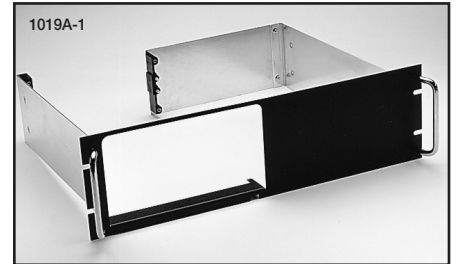
1019A-1 Rack mount kit for 1 instrument

1019A-2 Rack mount kit for 2 instruments

1019A-2G Dual rack mount kit for Models 230-1 and 595 (gray)

For use with: 230, 230-1, 263, 595

DIMENSIONS: 132mm high × 483mm wide × 356mm deep (5¼ in × 19 in × 14 in).



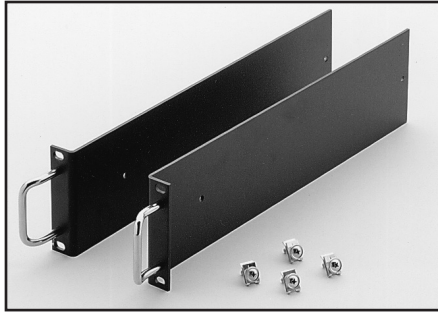
1.888.KEITHLEY (U.S. only)

www.keithley.com

KEITHLEY

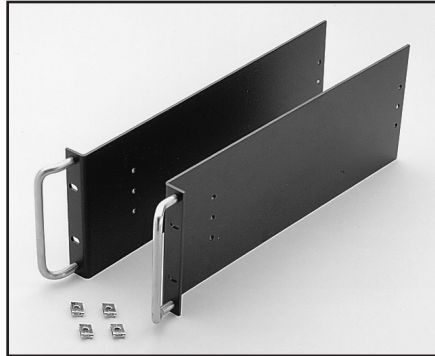
A GREATER MEASURE OF CONFIDENCE

Racks and Rack Mount Kits



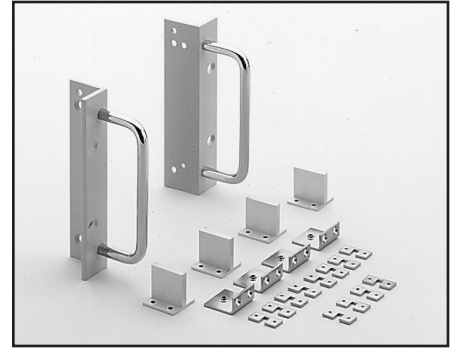
Model 1938 Fixed Rack Mount Kit: Consists of two flanged brackets and hardware for mounting the Model 236, 237, or 238 in a standard 48.3cm (19 in) equipment cabinet. Can be used with Model 8000, 8000-10 or 8000-14. 89mm (3½ in) height.

For use with: 236, 237, 238



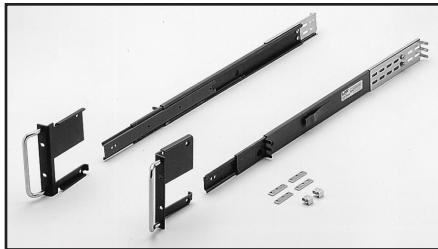
Model 2288 Fixed Rack Mount Kit: Consists of two flanged brackets and hardware for mounting the Model 590 (Model 2288-1G, gray) in a standard 48.3cm (19 in) equipment cabinet. Can be used with Model 8000, 8000-10, or 8000-14. 132mm (5¼ in) height.

For use with: 590



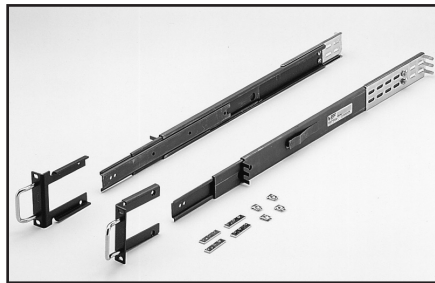
Model 3900-2: Dual rack mount kit. Includes all necessary hardware to mount two units side by side in a 132mm (5¼ in) high rack space.

For use with: 3321, 3322, 3330, 3910, 3930A, 3933A, 3940



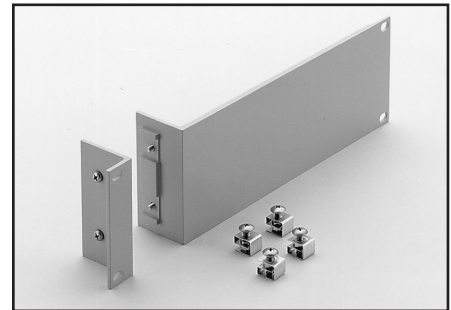
Model 1939 Slide Rack Mount Kit: Consists of two sets of flanged brackets, equipment slides, and hardware for mounting the Model 236, 237, or 238 in a standard 48.3cm (19 in) equipment cabinet. Can be used with Model 8000. 89mm (3¼ in) height.

For use with: 236, 237, 238



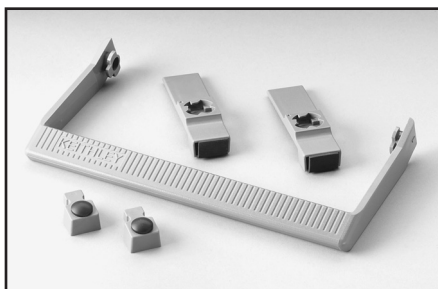
Model 2289A Slide Rack Mount Kit: Consists of two sets of flanged brackets, equipment slides, and hardware for mounting the Model 590 in a standard 48.3cm (19 in) equipment cabinet. Can be used with Model 8000. 132mm (5¼ in) height.

For use with: 590



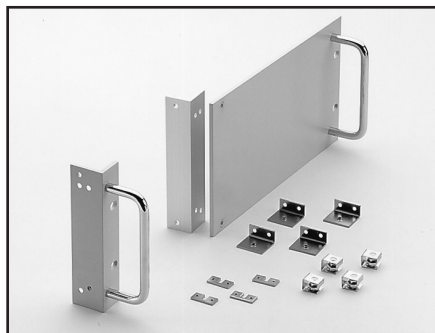
Model 4288-1 Fixed Rack Mount Kit: Single-unit rack mount kit. Height: 88mm (3½ in).

For use with: 428, 486, 487, 2000 Series, 2182, 2300 Series, 2400 Series, 2500 Series, 2700, 2701, 6514, 6517A, 6430, 6485, 6487, 7001



Model 2000-Benchkit: Benchtop Restore Kit. Rubber feet and carrying handles are removed during rack mounting. These items can be used with any of Models 2000 Series, 2300 Series, 2400 Series, 2500 Series, 2700, 2701, 6430, 6517A, 6485, 6487, and 7001 to convert it back to a benchtop instrument.

For use with: 2000 Series, 2300 Series, 2400 Series, 2500 Series, 2700, 2701, 6430, 6517A, 6485, 6487, 7001



Model 3900-1: Single-unit rack mount kit. Includes all necessary hardware to mount one unit in a 132mm (5¼ in) high rack space.

For use with: 3321, 3322, 3330, 3910, 3930A, 3933A, 3940



Model 4288-2 Fixed Rack Mount Kit: Enables rack mounting of two Models 428, 486, 487, 2000 Series, 2182, 2300 Series, 2400 Series, 6514, 6517A, or 7001. Height: 88mm (3½ in).

For use with: 428, 486, 487, 2000 Series, 2182, 2300 Series, 2400 Series, 2500 Series, 2700, 2701, 6514, 6517A, 6430, 6485, 6487, 7001

1.888.KEITHLEY (U.S. only)

www.keithley.com

KEITHLEY

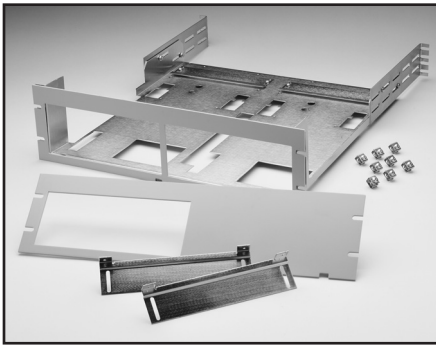
A GREATER MEASURE OF CONFIDENCE

Racks and Rack Mount Kits



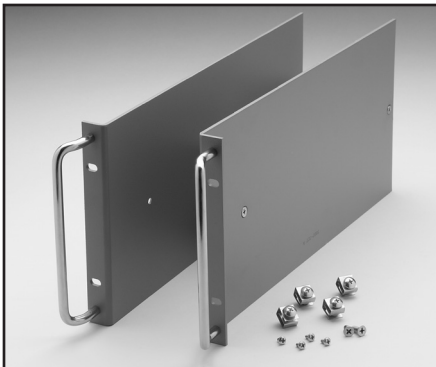
Model 4288-4 Fixed Rack Mount Kit: Enables rack mounting of one Model 195A, 196, 220, 224, 230, 263, 595, 614, 617, 705, 740, or 775A plus one of the instruments listed below. Height: 132mm (5¼ in).

For use with: 195A, 196, 230, 230-1, 263, 428, 486, 487, 595, 617, 740, 775A, 776, 2000 Series, 2182, 2300 Series, 2400 Series, 2700, 2701, 6512, 6514, 6485, 6487, 6517A, 7001



Model 4288-5 Fixed Rack Mount Kit: The single- and dual-instrument front panels included enable rack mounting of either one or two 3½-inch instruments. Height: 132mm (5¼ in). Depth: 457mm (18 in).

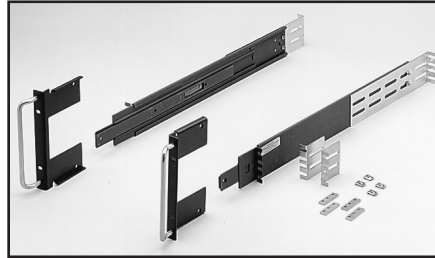
For use with: 428, 486, 487, 2000 Series, 2182, 2300 Series, 2400 Series, 2500 Series, 2700, 2701, 6514, 6517A, 6430, 6485, 6487, 7001



Model 7002-RMK-1 Fixed Rack Mount Kit: Two 7 in. flanged brackets and hardware for mounting Model 7002 in a standard 48.3cm (19 in)

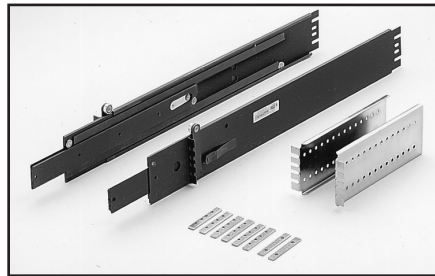
equipment cabinet. Can be used with Model 8000, 8000-10, 8000-14 or 8000-17.

For use with: 7002



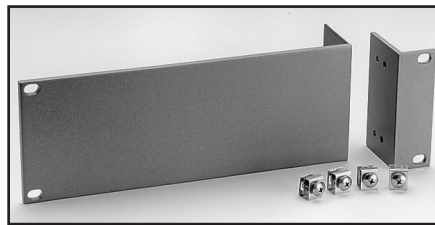
Model 7002-RMK-2 Slide Rack Mount Kit: Two sets of flanged brackets, slides, and hardware to mount Model 7002 in standard 48.3cm (19 in) equipment cabinet. Can be used with Model 8000.

For use with: 7002



Model 7079 Slide Rack Mount Kit: Two sets of flanged brackets, slides, and hardware to mount Model 707A in standard 48.3cm (19 in) equipment cabinet. Can be used with Model 8000.

For use with: 707A



Model 7768: Single fixed rack kit for mounting Model 776. Height: 88mm (3½ in).

For use with: 776



Model 8000: A 28-inch high equipment cabinet that is open on both ends. It will accept all Keithley rack mounting kits as well as most rack kits provided with other instrumentation. The dark brown 8000 comes fully assembled, with handles permanently installed on each side. One hundred chrome Phillips head screws with mylar washers and clip nuts are provided for instrument mounting. Rack mounting kits are available separately.

DIMENSIONS: 711mm high × 483mm wide × 533mm deep (28 in × 19 in × 21 in).



Model 8000-10: A standard 10-inch high, 19-inch wide equipment cabinet for enclosing instrumentation for bench or automated test system application. The Model 8000-10 will accept most Keithley mainframe models and fixed rack mount kits. The cabinet is supplied with rubber feet for benchtop applications, and the sturdy steel construction will support additional instrumentation stacked on top.

DIMENSIONS: 254mm high × 483mm wide × 533mm deep (10 in × 19 in × 21 in).

1.888.KEITHLEY (U.S. only)

www.keithley.com

KEITHLEY

A GREATER MEASURE OF CONFIDENCE

Racks and Rack Mount Kits



Model 8000-14A: A standard 14-inch high, 19-inch wide equipment cabinet for enclosing instrumentation for bench or automated test system application. The Model 8000-14A will accept all Keithley mainframe models and fixed rack mount kits. The cabinet is supplied with rubber feet for benchtop applications including enclosure of the 707A Switching Matrix, and the sturdy steel construction will support additional instrumentation stacked on top.

DIMENSIONS: 356mm high × 483mm wide × 648mm deep (14 in × 19 in × 25.5 in).



Model 8000-17A: A standard 17-inch high, 19-inch wide equipment cabinet for enclosing instrumentation for bench or automated test system application. The Model 8000-17A will accept all Keithley mainframe models and fixed rack mount kits. The cabinet is supplied with rubber feet for benchtop applications including enclosure of the 707A Switching Matrix, and the sturdy steel construction will support additional instrumentation stacked on top.

DIMENSIONS: 444mm high × 483mm wide × 457mm deep (17½ in × 19 in × 18 in).

Carrying Cases



Model 1050: A lightweight, padded carrying case.

For use with: 428, 486, 487, 2000 Series, 2182, 2300 Series (except 2306), 2400 Series, 2500, 2510, 2700, 2701, 6485, 6487, 6514, 6517A, 7001

DIMENSIONS: 432mm × 419mm × 152mm (17 in × 16½ in × 6 in).



Model 5801: Test lead pouch designed to strap to the chassis of Models 197A and 580.

For use with: 197A, 580

1.888.KEITHLEY (U.S. only)

www.keithley.com

KEITHLEY

A GREATER MEASURE OF CONFIDENCE